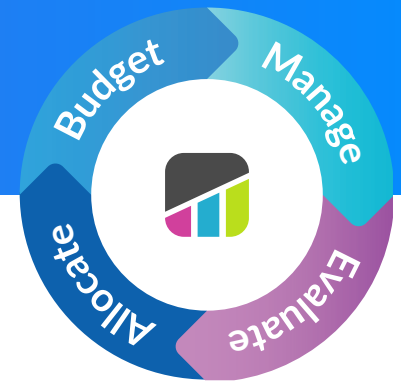


The Balance Suite



Our software platform *Balance* helps K-12 administrators **allocate, budget, manage, and evaluate** district spending. The *Balance* suite of products works with your established finance and accounting systems to make managing funds and enacting strategic decisions that maximize student outcomes easy, efficient, and effective.

UID	Institation Name	Type	Base	Equity	Other	ELL	Total	PPS
2280	Wilson High School	High School	\$232,864	\$171,069	\$23,890	\$10,332	\$438,164	-0.05%
2191	Allovue Middle School	Middle School	\$195,990	\$655,000	\$129,890	\$80,870	\$1,061,750	1.00%
1123	Alice Middle School	Middle School	\$72,400	\$320,880	\$21,908	\$341,789	\$526,990	-0.05%
1211	Bellewood Elementary	Elementary School	\$438,921	\$87,330	\$32,000	\$24,332	\$671,584	-0.05%
2212	Cadaveret Middle School	Middle School	\$438,870	\$321,000	\$180,766	\$221,009	\$2,058,087	-0.05%
2188	Clay County HS	High School	\$324,345	\$58,933	\$195,230	\$62,881	\$176,023	1.00%
2211	Wilson High School	High School	\$232,864	\$171,069	\$23,890	\$10,332	\$438,164	-0.06%
3422	Kennwood Middle School	Middle School	\$195,990	\$454,845	\$129,890	\$80,870	\$826,772	1.00%
1254	Clay Middle School	Middle School	\$72,400	\$320,880	\$21,908	\$341,789	\$526,990	-0.05%
2541	New Berlin Elementary	Elementary School	\$438,921	\$87,330	\$32,000	\$24,332	\$671,584	-0.50%
2281	Sweet Middle School	Middle School	\$438,870	\$821,000	\$180,766	\$221,009	\$2,212,087	-0.45%
2287	Central High	High School	\$324,345	\$58,933	\$195,230	\$62,881	\$176,323	0.85%

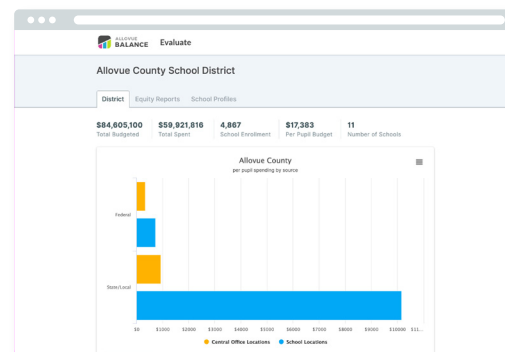
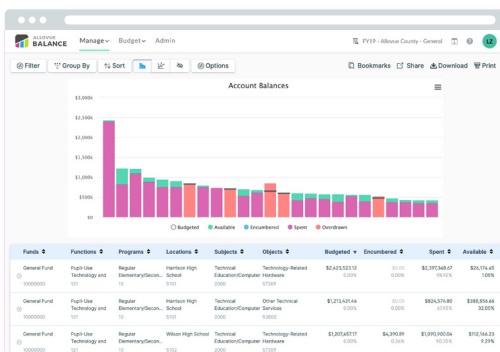
School	Allocated	Planned	Total Remaining
3101 - Lincoln Elementary School	\$4,532,447.00	\$962,292.85	\$3,670,154.15
3102 - Central Elementary School	\$4,538,300.00	\$100,926.29	\$4,437,373.71
3103 - Washington Elementary School	\$8,332,523.00	\$699,202.21	\$7,633,320.79
Discretionary	\$48,200.00	\$24,120.00	\$24,080.00

Allocate

Create staffing and weighted allocation models for an **equitable school funding formula** that is data-driven and student-centered. Using *Balance Allocate*, align priorities and equity initiatives with resource allocation to schools so that dollars are allocated based on student need.

Budget

Collaboratively develop staffing and spending plans aligned to district goals in real-time with **data visualization and budget transparency**. With *Balance Budget*, gain early insights on potential hiring needs or offer help to administrators who need extra support.



Manage

View account balances and track spending using your established finance and accounting system. Let *Balance Manage* facilitate strategic financial management, allowing you to monitor actual spending against your budgets down to the transactional level.

Evaluate

Examine the distribution of expenditures against underlying drivers and performance measures to **reveal insights that can drive decisions**. Using *Balance Evaluate*, analyze actual spending by location, student characteristics, academic performance, and other factors to better understand whether resource allocation processes are supporting fiscal equity.